

For Global Gateway “Women & Children in Crisis” – Local Component

As we have previously mentioned, the Pulitzer Center and Civitas are sponsoring an essay contest for students in conjunction with the “Women & Children in Crisis” Global Gateway project. The title of the contest is “Pulitzer Center Essay Contest for Spring 2009” and the topic is:

What are the similarities and differences between the issues of abuse and violence towards women and children in our local community and those in countries such as Nepal, the Democratic Republic of the Congo, and Iraq? Be sure to address what services and programs are available or lacking for women and children in each setting.

As the Pulitzer web portal goes live April 6 or 7, it will give you considerable information on the international front. Civitas is providing resources for local research. Civitas is still continuing to explore other agencies and individuals that can be of help, but those listed below should be of assistance to you now.

Why is this information important? Because as you learn about many of the atrocities that have and are occurring overseas, you will want to establish a “base line” that depicts the extent of the problems in our community and what resources are available to help women and children in need. The more that you know about the nature of abuse in our local community and the services that are provided to address the problems, the more equipped you will be to ask pertinent questions of our international journalists.

You can e-mail or phone any of the resources listed below. Make sure that you have your questions in order before you do, and if you phone, be sure to have pencil and paper so that you can write down answers.

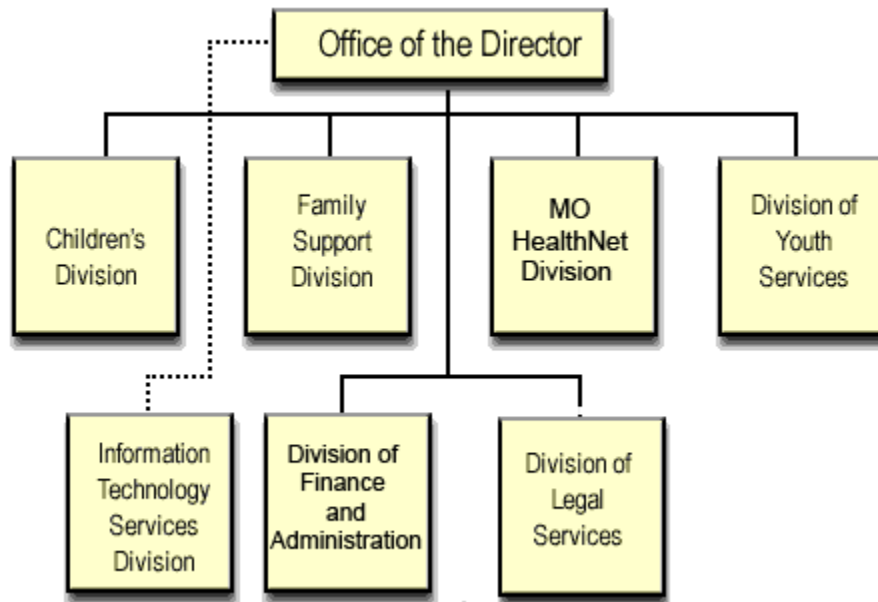
We will update this document as we gather more information, and perhaps more importantly, student assessments of the value of each of these resources.

If you have any questions, contact me at arthur@civitas-stl.com or at (314) 495-1720. -- Arthur

1. Missouri Department of Social Services – www.dss.mo.gov

a. Organization Chart

DSS Organizational Chart



b. Tena Thompson
 Regional Director
 Wainwright Building
 111 No. 7th Street
 St. Louis, MO 63101
 (314) 340-7007

St. Louis City

Tena J. Thompson, Regional Director

Wainwright Children's Services 111 North 7th Street St Louis MO 63101 Phone: (314) 340-7000 Fax: (314) 340-7117 Children's Services Phone: (314) 340-7007	Sigel School Children's Services 2039 Russell Street St Louis MO 63104 Phone: (314) 773-7742/8774 Fax: (314) 776-7489
South Broadway	Prince Hall Family

Child Abuse and Neglect Intake - Children's Services 6821 South Broadway St Louis MO 63111 Phone: (314) 301-7800 Fax: (314) 301-7888	4411 N Newstead Avenue St Louis MO 63115 Switchboard Phone: (314) 877-2000 Children's Services Phone: (314) 877-2300 Children's Services Fax: (314) 877-2361
--	--

<i>St. Louis County</i>

Susan Shelton, Acting Regional Director

9900 Page Avenue St. Louis MO 63132 Switchboard Phone: (314) 426-9600 Phone: (314) 426-8401 Fax: (314) 426-6035	North County Center 4040 Seven Hills Drive Florissant MO 63033 Phone: (314) 877-3050 Fax: (314) 877-3042
Jennings Service Center 8501 Lucas & Hunt St. Louis, MO 63136 Phone: (314) 877-2550 Fax: (314) 877-2551	South Service Ctr. 7545 South Lindbergh Suite 110 St. Louis, MO 63125 Phone: (314) 416-2700 Fax: (314) 416-2933

Quality Improvement Specialist: Paula R. White Paula.R.White@dss.mo.gov (314) 890-7331

Child Abuse and Neglect (Children's Division):

- [Hotline](#)
- [How to Report Child Abuse and or Neglect](#)
- [Investigations](#)
- [Child Death Investigations \(STAT\)](#)
- [Child Abuse Review Boards](#)

c. 2007 Annual Report (PDF) -- <http://www.dss.mo.gov/re/pdf/can/cancy07.pdf>

d. Youth Treatment Services

- [Aftercare](#)
- [Case Management](#)
- [Day Treatment](#)
- [Dual Jurisdiction Program](#)
- [Education](#)
- [Family Therapy](#)
- [Individual Treatment Plan](#)
- [Intensive Case Supervision](#)
- [Interstate Compact on Juveniles](#)
- [Juvenile Court Diversion](#)
- [Residential Care](#)

2. Children's Defense Fund -- <http://www.childrensdefense.org/>

3. Legal Advocates for Abused Women – www.laawstl.org

- a. Executive Director: Christine Hustedde (314) 535-0515
- b. Katie Wessling, JD (314) 535-0625 ktwessling@sbcglobal.net
- c. Lina Schimmel (314) 535-0884
- d. Aimee Mapes (314) 535-0684; laaw@sbcglobal.net
- e. Paula R.; (314) 780-8160

i. Between 9:00 AM – 4:00 PM

4. Missouri Coalition Against Domestic Violence

- a. Emily in Jeff City – 1-(573) 634-4161